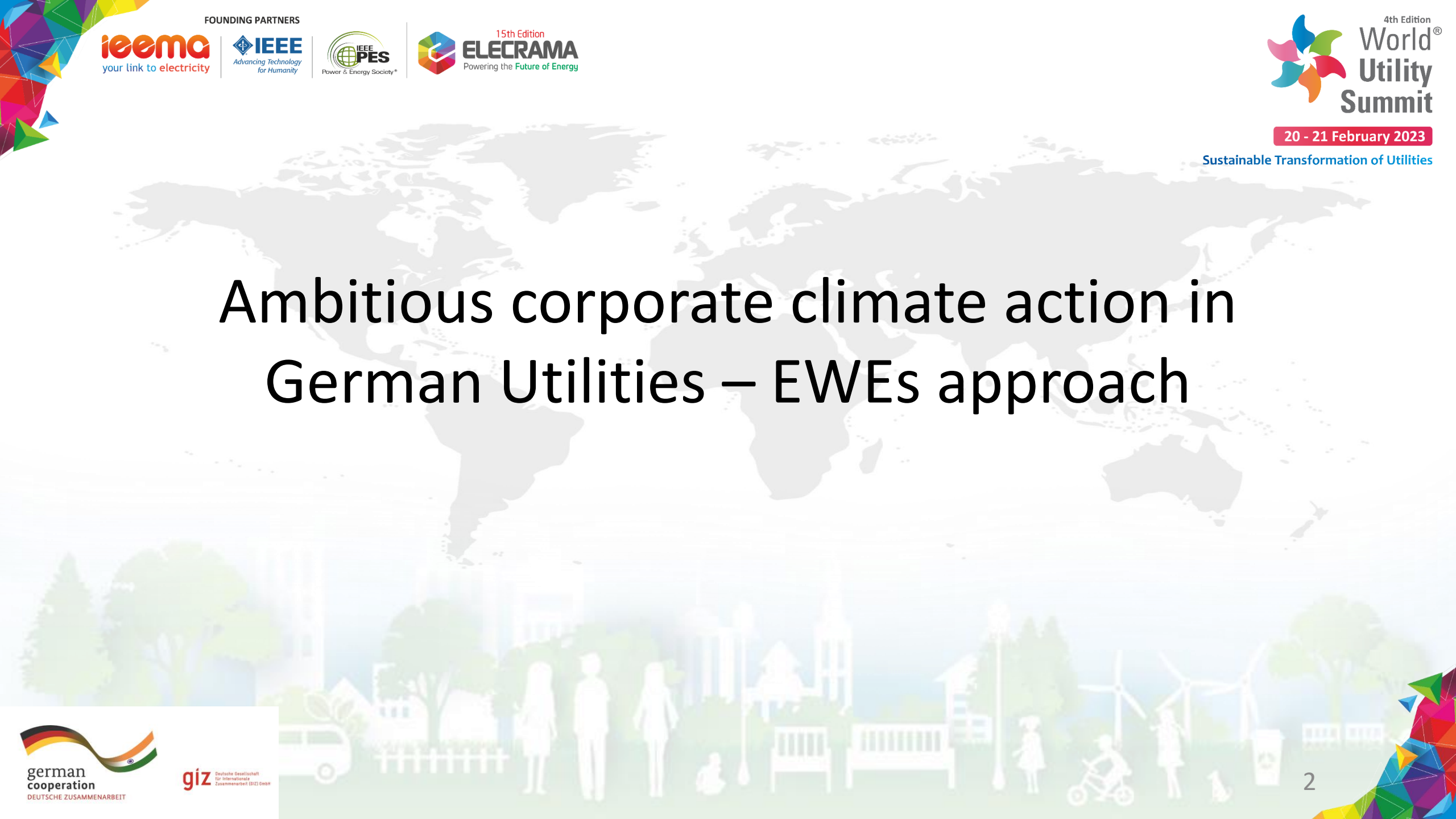




# Ambitious corporate climate action in Utilities – EWEs approach

**Marcus Merkel**  
**Senior Strategy Manager**  
**EWE AG - Germany**





# Ambitious corporate climate action in German Utilities – EWEs approach



# International context

## Approved science-based targets approach

### EWE's scoping, targets and first results

### Development of CO2-Emissions and KPIs



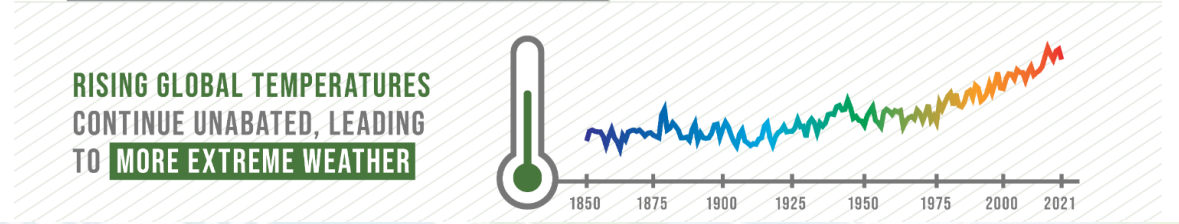
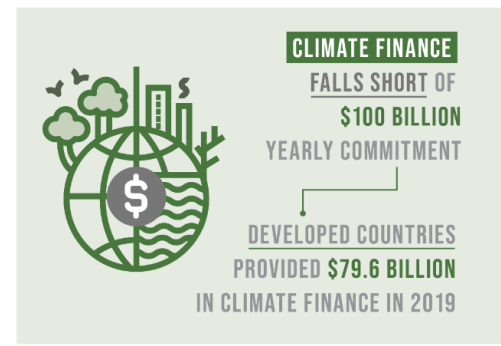
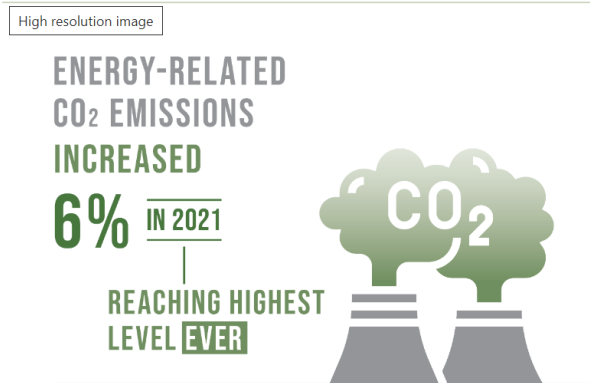
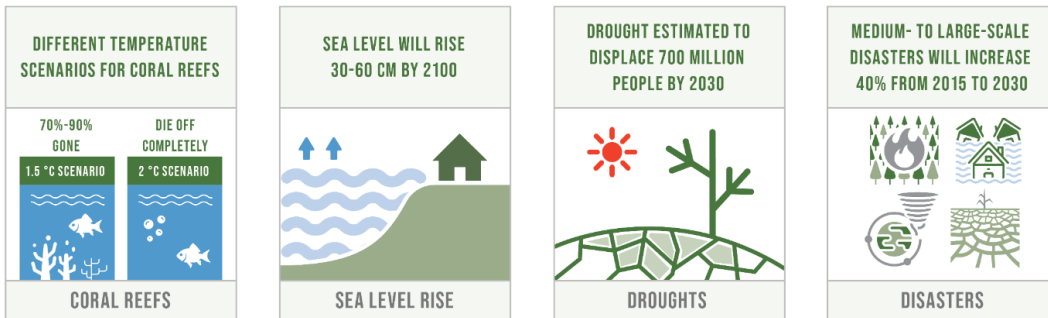
# International context & best plan to support sustainability – SDG's



# Example: SDG Goal 13 „Take urgent action to combat climate change and its impacts”



OUR WINDOW TO AVOID CLIMATE CATASTROPHE IS CLOSING RAPIDLY



# Best practice: Science Based Targets Initiative (SBTi)

- Joint initiative of CDP, United Nations Global Compact, World Resources Institute (WRI) und World Wide Fund for Nature (WWF)
- Provision of scientific based methods to estimate the corporate climate contribution for different sectors/ respective CO<sub>2</sub>-budgets.
- The Science Based Targets initiative (SBTi) drives ambitious climate action in the private sector by enabling organizations to set science-based sector-specific emissions reduction targets .
- Distinction between different reduction pathways
- Vallidation of the measurement set and public communication of the results
- Over 4.500 companies allready joined SBTi
- SBTi is often requested by rating agencies and is an important source of information to their scoring.



For further information:  
<https://sciencebasedtargets.org/>

# SBTi has validated EWE's ambitious corporate targets to reduce GHG emissions in 2022



SCIENCE  
BASED  
TARGETS

DRIVING AMBITIOUS CORPORATE CLIMATE ACTION



- **SBTi has validated EWE's CO2-reduction targets** according to **support the Paris Climate Agreement** and thus support the aim to commonly **limit global warming to 1.5 degrees celsius**.
- **"EWE AG commits to reduce absolute scope 1 and 2 GHG emissions 65% by 2030 from a 2018 base year.** Within that target, EWE AG commits to reduce absolute scope 1 GHG emissions from power generation 76.8% per kWh and **commits to reduce absolute scope 1 and 2 non-power generation GHG emissions 50.4%.** EWE AG also **commits to reduce scope 3 GHG power generation emissions from fuel and energy related activities 52.1% per kWh by 2030** from a 2018 base year. **EWE AG further commits to reduce absolute scope 3 GHG emissions from use of sold products 30% within the same timeframe.** EWE AG finally commits to reduce all other absolute scope 3 GHG emissions 30% within the same timeframe."



# Thus, EWE has already started the journey to a climate neutral future in 2035



***Our Mission:  
„Make climate protection doable.  
Today, Tomorrow.  
For Generations.“***

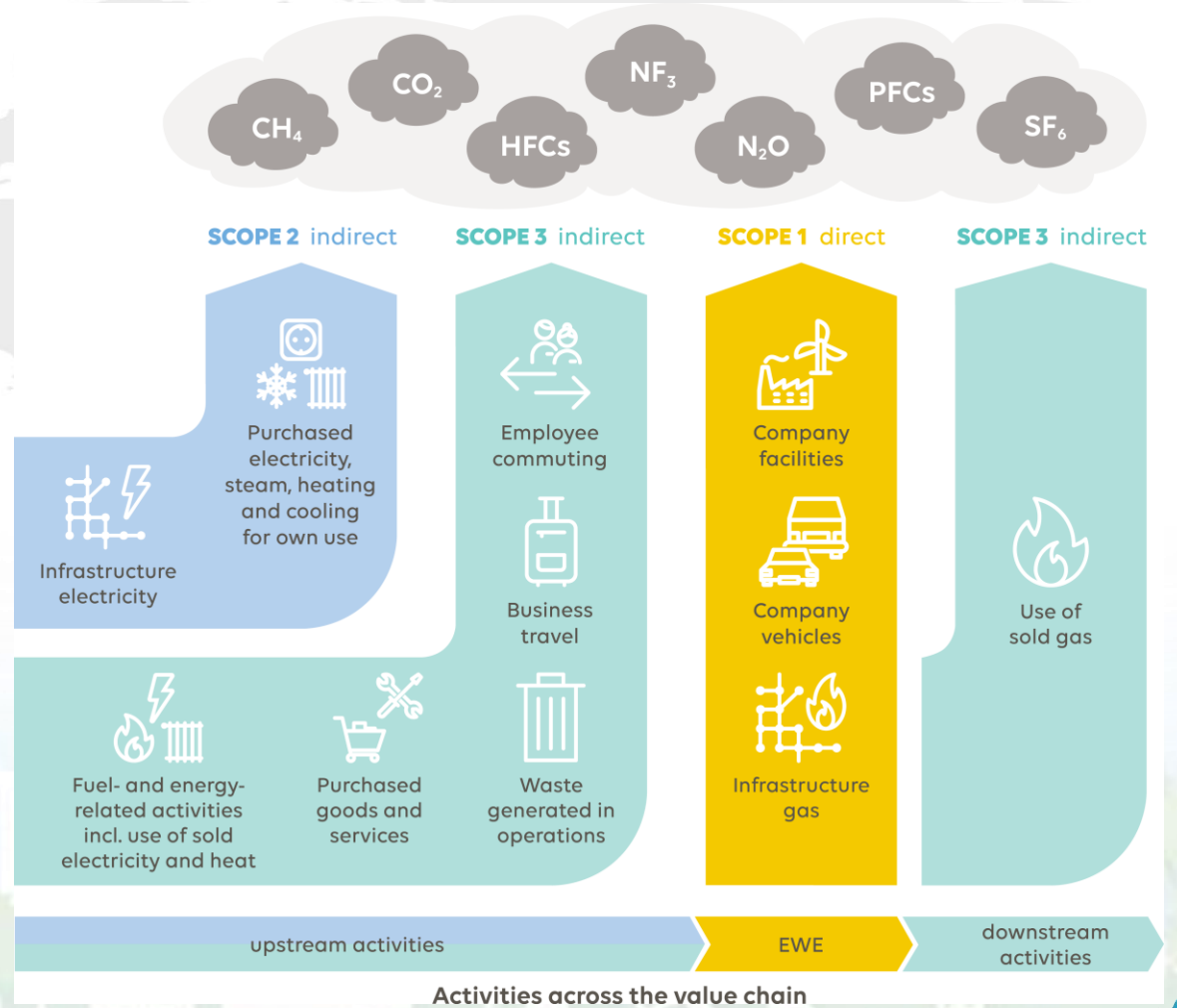




# We assume responsibility along EWE's entire value chain

Emission category *	Definition
<b>Scope 1</b> Direct Emissions	Emissions from facilities owned or controlled by EWE
<b>Scope 2</b> Indirect Emissions	Emissions from the generation of energy that is purchased and consumed by EWE
<b>Scope 3</b> Indirect Emissions	All indirect emissions (except Scope 2) that occur in EWE's upstream and downstream value chain

**Scope 1 and 2 are fully considered as well as significant categories in Scope 3**



# EWE's climate targets for the year 2035

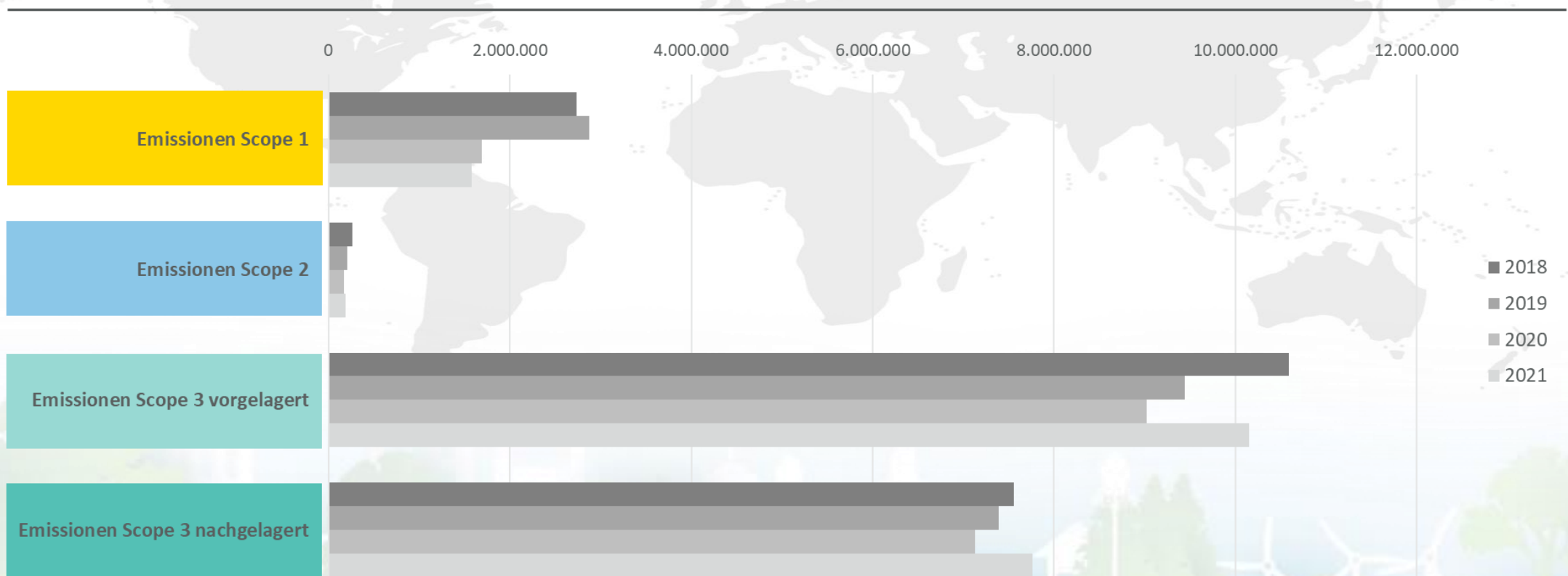


In order for these goals to be achieved, we will be committed to the realization of the necessary political, regulatory and market conditions



# Development of our greenhouse gas emissions in the last four years (2018-2021)

Scope 1-3 Emissions (in t CO<sub>2</sub>e)



# Development of our greenhouse gas emissions \* in the last four years (2018-2021)

	2018	2019	2020	2021
<b>in t CO<sub>2</sub>eq</b>				
Scope 1	2.734.121	2.875.172	1.688.662	1.575.379
Scope 2 (location-based)	272.869	217.006	182.286	212.038
Scope 2 (market-based)	261.518	207.360	169.832	185.133
Scope 3	18.146.395	16.828.514	16.143.091	17.911.716
<b>Total (market-based)</b>	<b>21.142.034</b>	<b>19.911.047</b>	<b>18.001.584</b>	<b>19.672.228</b>

## Scope 1: Development of Emissions/Actions

- Decrease in CO<sub>2</sub> emissions from hard coal for electricity production mainly due to the gradual decommissioning of coal block 6.

## Scope 2: Development of Emissions/Actions

- Reduction of self-consumption of electricity and grid losses of electricity due to the pandemic
- Increase in the amount of green electricity purchased for self-consumption
- Long-term trend in the decrease of the specific CO<sub>2</sub> value for the German electricity mix.

## Scope 3 Development of Emissions/Actions

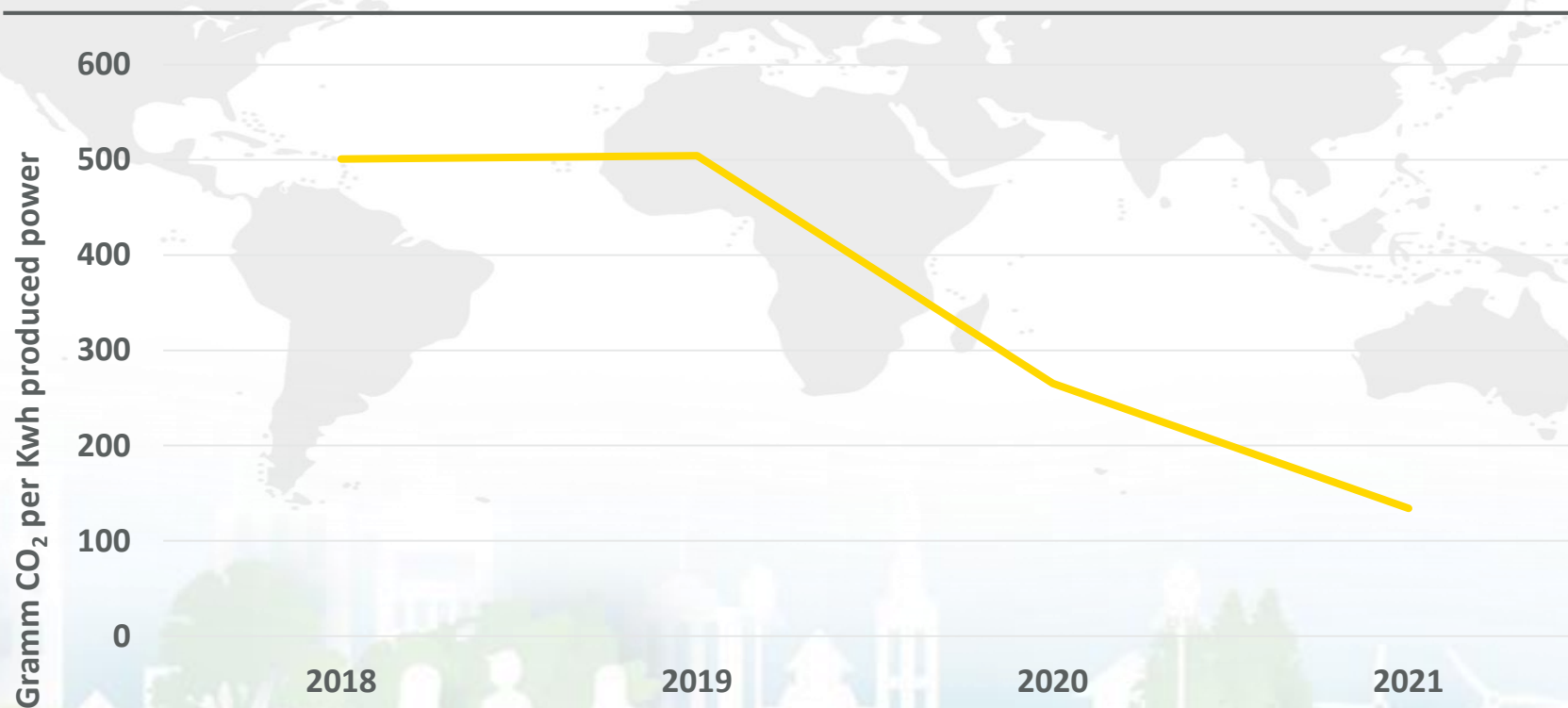
- No trend discernible at the moment
- Decrease in CO<sub>2</sub> emissions from the upstream coal procurement chain due to minimized quantities of coal
  - Sales volume of natural gas depending on the weather
  - Long-term trend in the decrease of the specific CO<sub>2</sub> value for the German electricity mix

\* CO<sub>2</sub>, CH<sub>4</sub>, N<sub>2</sub>O, SF<sub>6</sub>, HFCs, PFCs, NF<sub>3</sub>



# Key Performance Indicator: Specific CO<sub>2</sub>-Emissions from power production

Specific CO<sub>2</sub>-Emissions from power production





# EWE's power generation devided by primary energy sources

	2018	2019	2020	2021
<b>in MWh</b>				
Hard Coal	1.921.257	1.959.842	684.840	619.405
Natural Gas	272.854	442.464	536.749	263.674
Wind	1.051.082	1.082.527	1.447.410	3.885.315
Waste to Energy	447.776	475.211	463.233	459.668
Other Renewables	140.675	131.228	132.510	140.593
Fuel Oil and Others	5.014	5.931	2.391	1.189
<b>Total</b>	<b>3.838.658</b>	<b>4.097.203</b>	<b>3.267.133</b>	<b>5.369.844</b>

The decommissioning of coal block 6 in the Hafen power plant in Bremen and the founding of Alterric have led to a significant change in electricity generation. In 2018, 49.8 percent of electricity generation came from hard coal, but in 2021 its share was only 11.5 percent. In return, the share of wind energy increased from 27.3 to 72.1 percent.

Note: The calculation includes conventional combined heat and power plants and power plants, CHPs, waste incineration plants, wind turbines, biogas plants and hydroelectric power plants of the EWE Group, including proportionate capacities from at-equity investments, but excluding emissions from top gas blocks 4 operated by third parties.



# Summary

- **Climate neutrality as corporate target is extremely ambitious** (so is the challenge of the 21<sup>st</sup> century to combat global warming). But it is doable. It needs joined efforts of all players! **TOP players need to take the lead! Now!**
- There is already **strong regulatory and political support** within the EU and on national level to set **ambitious targets** as well as strong impact of **Investors to push for green investments**. The EU-framework for sustainability is evolving fast (e.g. EU Taxonomy Regulation, 2022; Update of the Non-Financial Reporting Directive; ESG Reporting, ...)
- For EWE: First important decision was to **end power production based on coal and switch power production systematically to green sources**.
- 17 Actions were identified to support the initial transition process. Strong focus is on us (scope 1&2) but we will further develop our green product offerings and procurement to provide our customers with more and more “green products”. **This is scope 3 and it’s the real challenge**.
- **We are on our way .... join us to fight global warming as utility and start your activities now. There will be no better now in the future!**

**We  
Here  
Now**

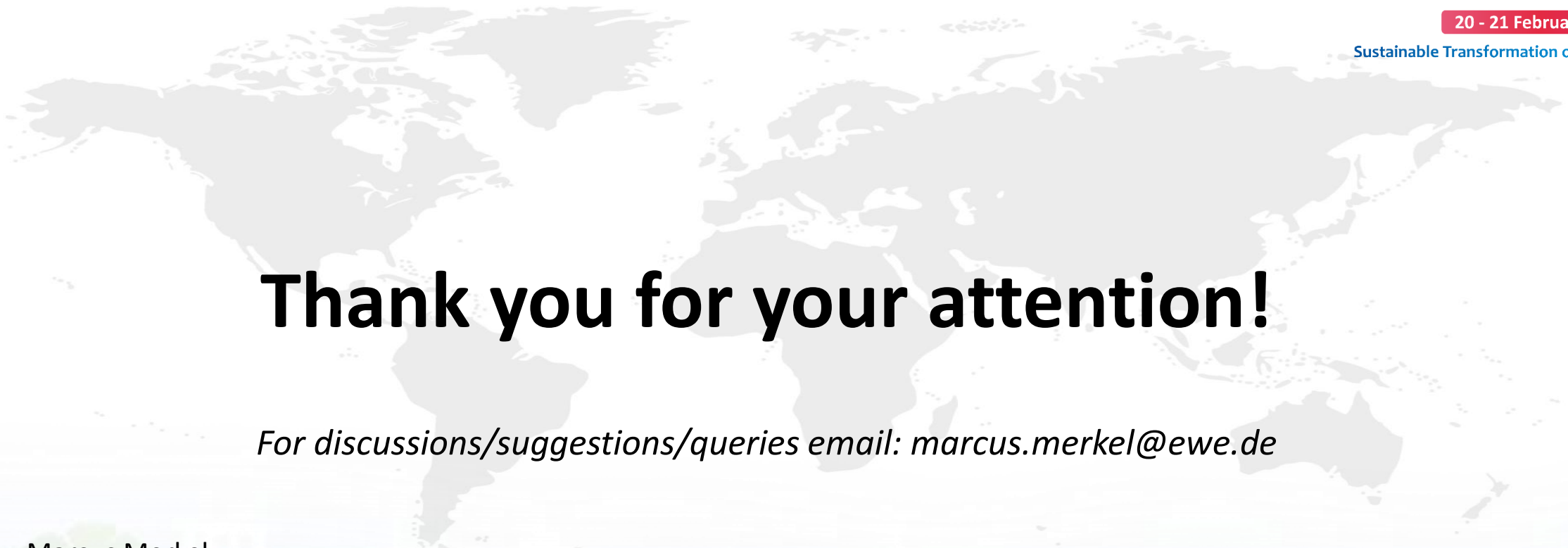


**When?**

**अब  
हम  
यहाँ  
कहाँ**

**कब?**





# Thank you for your attention!

*For discussions/suggestions/queries email: [marcus.merkel@ewe.de](mailto:marcus.merkel@ewe.de)*

Marcus Merkel  
EWE Aktiengesellschaft  
Tirpitzstraße 39 - 26122 Oldenburg - Germany  
[info@ewe.de](mailto:info@ewe.de) - [ewe.de](http://ewe.de)

